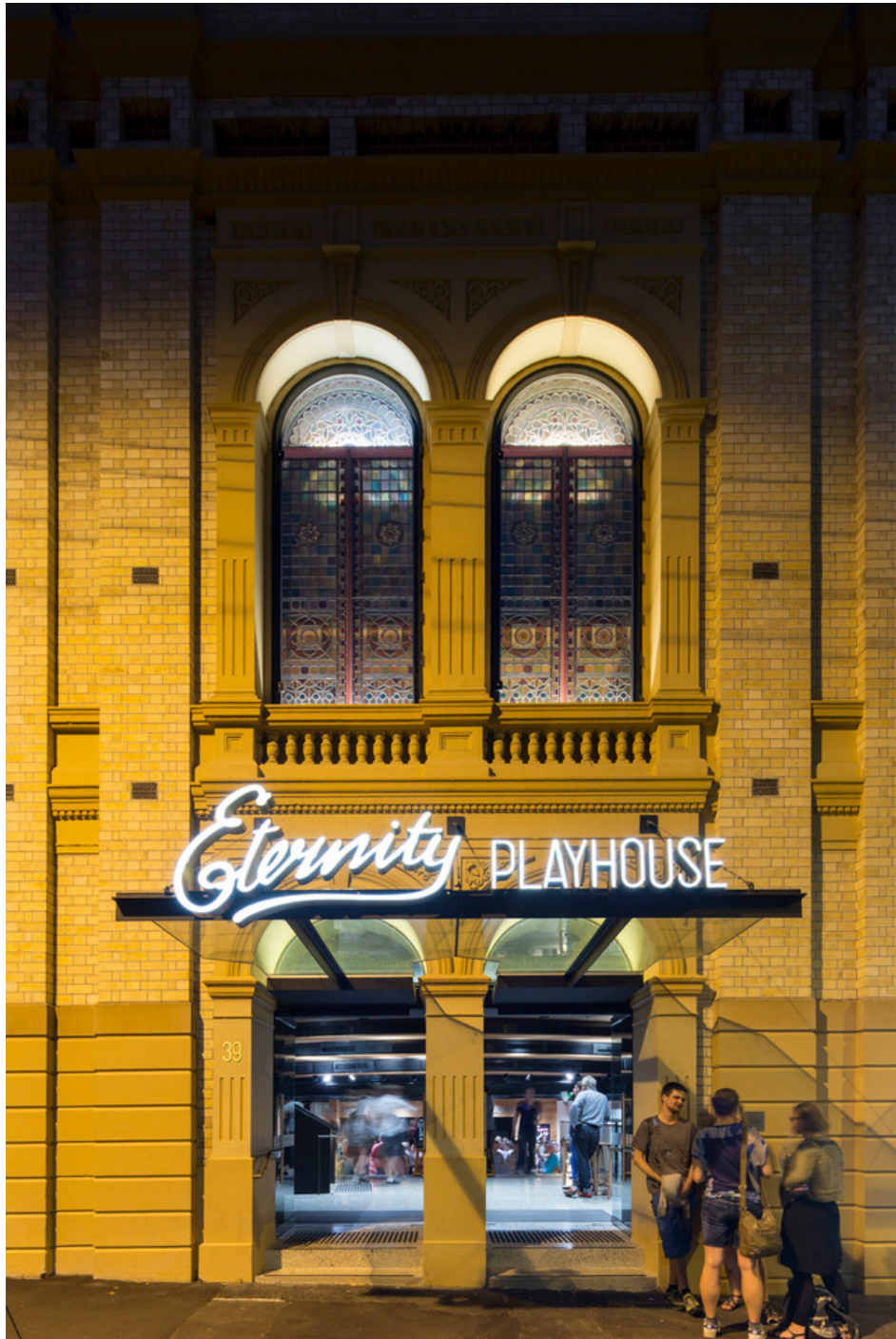


**DARLINGHURST THEATRE COMPANY**

**VISUAL STORY**



# Welcome to Darlinghurst Theatre Company

This visual story will give you more information on what to expect when you visit our theatre.

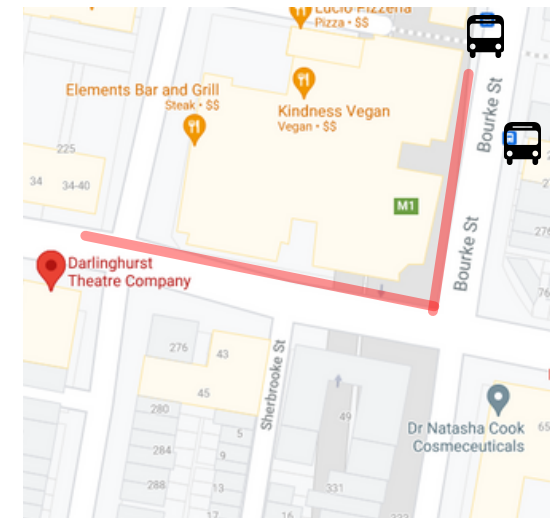
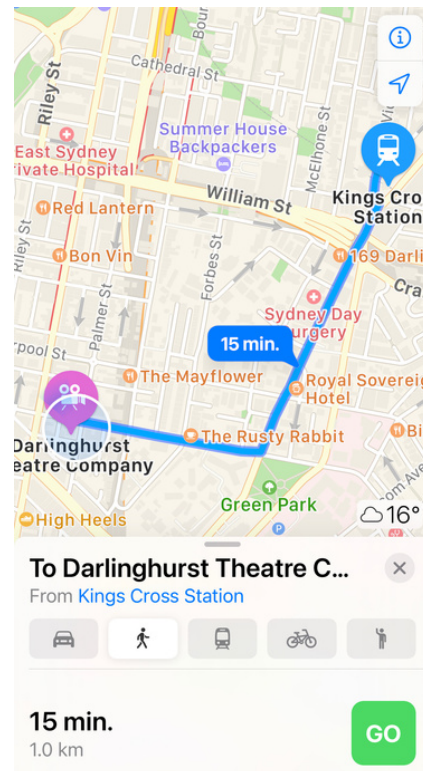
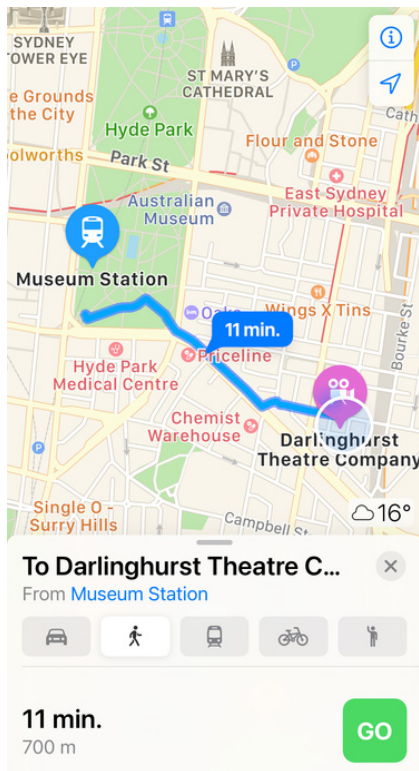
# PUBLIC TRANSPORT

Darlinghurst Theatre Company is located at  
39 Burton Street, Darlinghurst 2010

The theatre is on the corner of Burton and Palmer Streets

The nearest train stations are  
Museum and Kings Cross.

There are a number of buses which  
stop near the theatre.



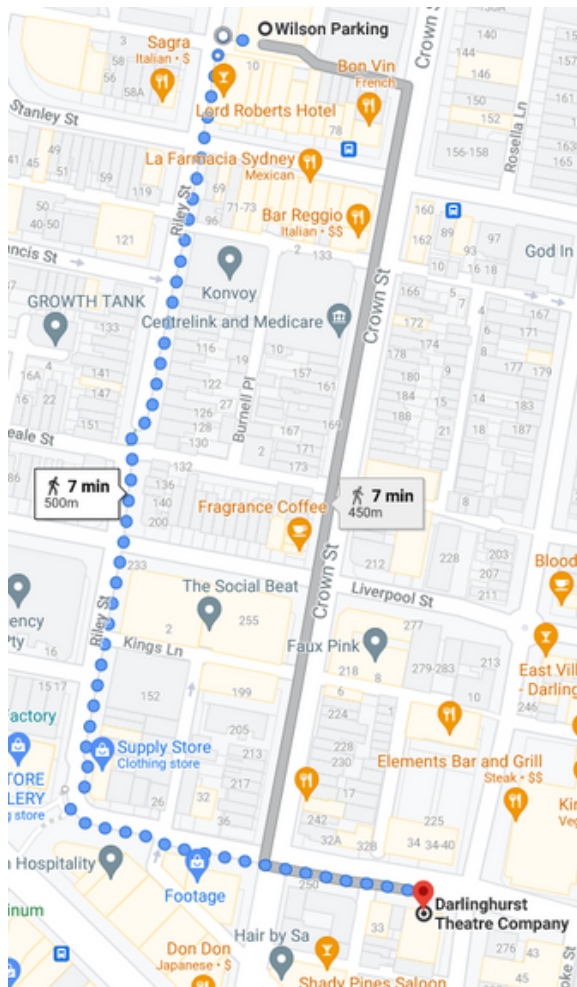
Busses down Oxford St stop  
near Palmer St.

Buses down Bourke St stop  
near Burton St.

# PARKING

There is limited timed street parking around the venue.

There is a Wilson's Parking complex at 70 Riley Street which is a 7min walk from the theatre.



*Darlinghurst Theatre Company has been working with the City of Sydney to implement Accessible Parking at the Theatre.*

There are now two (2) **accessible parking** spaces at 39 Burton St, opposite the main entrance and in front of ESCAC. *Please note they are yet to install drop kerbs.*



# ARRIVAL



Our theatre as seen from the Burton Street/Palmer Street side (approaching from the East)



Our theatre as seen from the Burton Street/Crown Street side (approaching from the West)

# ARRIVAL

Upon your arrival at the theatre, you will enter the main doors on Burton Street. The centre and right hand doors have 2 steps. The left hand door is step-free.

Once inside the foyer you will be greeted by a friendly Host who will be able to assist you should you require it.

It can get quite busy before a performance so we recommend arriving 30mins prior to the start of your performance.



# FACILITIES

Once inside there is a set of steps straight ahead which lead to the Box Office, Bar and Bathrooms.

On the right hand side there is an elevator which provides step-free access between all levels of the building.

**Your tickets will have been emailed to you (eTicket).** If you didn't receive them please speak to the Host or make your way to the Box Office (next page)



# FACILITIES

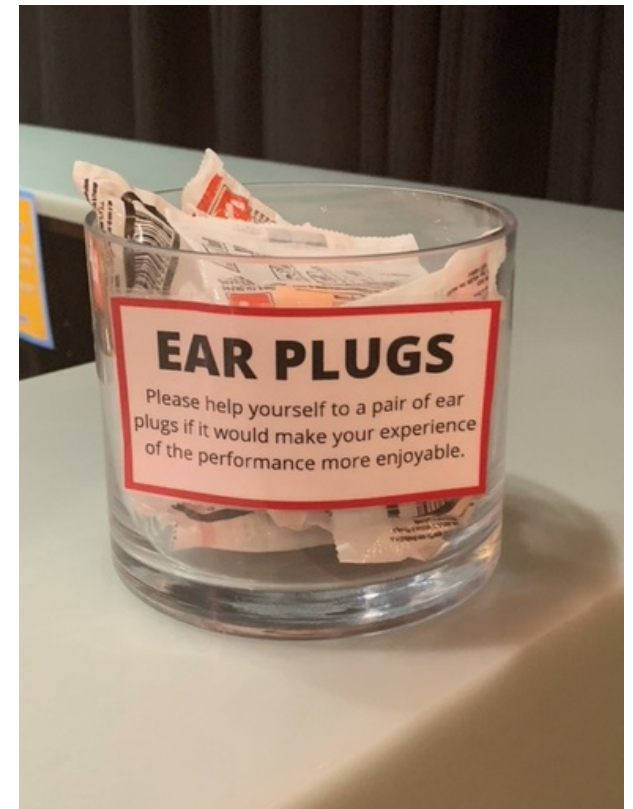
On the Lower Ground level you'll find the Bar and the Box Office.

You can find complimentary earplugs on the Box Office counter. Please help yourself should you need.

There is a lower section of the counter which connects the Bar and the Box office for those who need it.

There are also Large Print cast lists at the Box Office.

A hearing loop has been installed in the main auditorium which operates only with hearing aids equipped with the telephone coil (T-Switch). If you require the hearing loop facility, please notify Box Office staff prior to the event.





# FACILITIES

When facing the Bar and Box Office, all our bathrooms are to the right hand side.

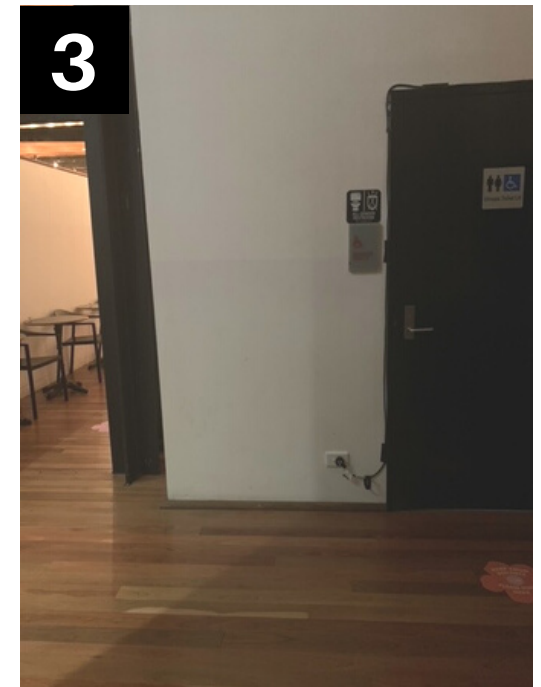
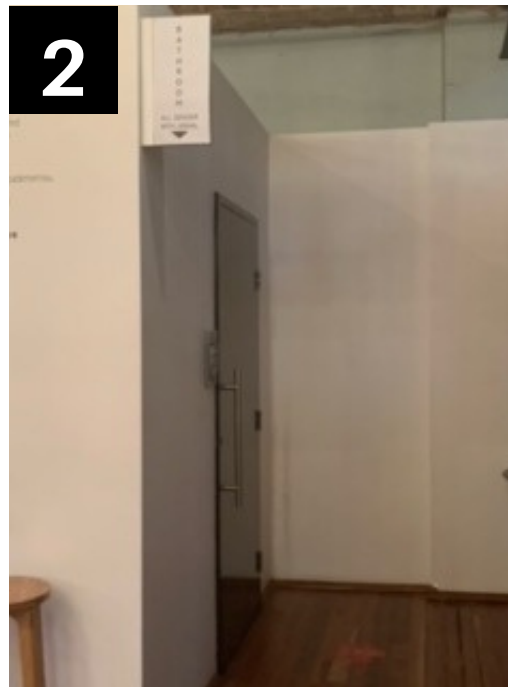
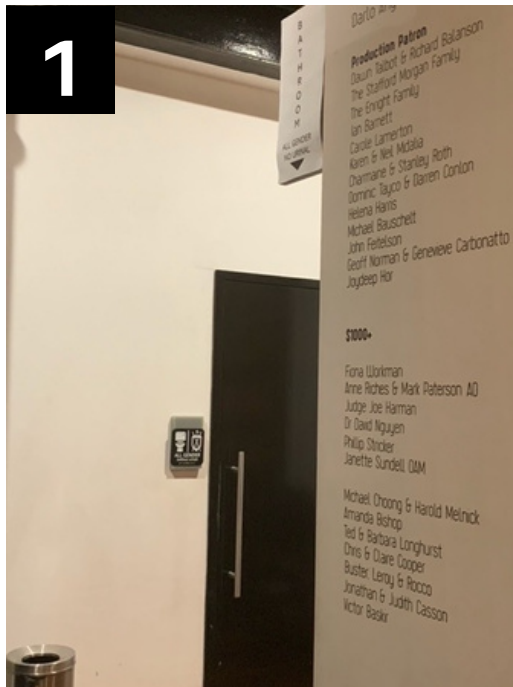
They are accessible via the stairs in front of you or by taking the lift (to your right) to the Lower Ground.



# BATHROOMS

There are three (3) all gender bathrooms, all on the Lower Ground floor.

1. A bathroom with cubicles and 1 ambulatory cubicle, to the left of the Darlo Angel wall
2. A bathroom with urinals and 1 ambulatory cubicle to the right of the Darlo Angel wall
3. An accessible bathroom opposite the lift



# SHOWTIME

An announcement will be made when the auditorium is open for you to take your seat. There will also be a "bell" sound. Your seat number will be on your ticket/eTicket.

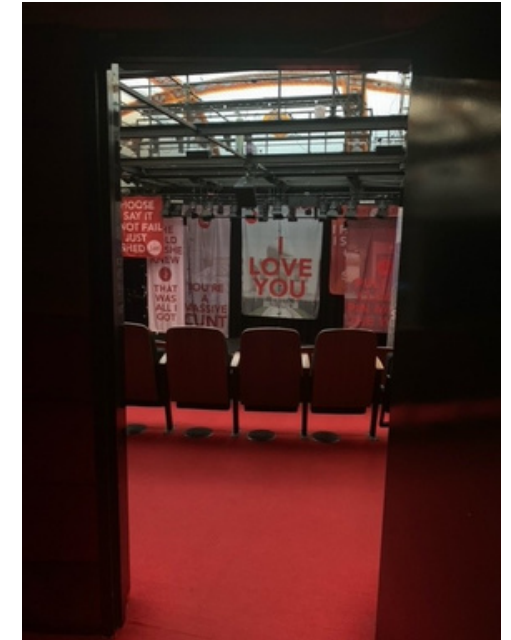
## Stairs

Take the stairs all the way to the top. The stairs enter the auditorium on the left hand side of the seating bank.



## Elevator

Take the elevator to Level 1. The elevator enters the auditorium on the right hand side of the seating bank.



# SHOWTIME

At the start of the performance, the auditorium will become darker as the House Lights are dimmed. If there are any lighting or sound effects, these will be on a sign at the entrance to the auditorium, as well as on the production page of our website.

Performers may roam in the auditorium before or during a performance.

You are welcome to leave the auditorium at any point, however you may not be able to return until an appropriate moment. Please check with Front of House Staff for more information.

If your performance has an interval this will be listed on the production page of our website, and on signage in the foyer. During the interval you can access the bar and bathrooms.



# POST SHOW

At the end of the show you will leave the venue the same way you came in. There will be Front of House staff in the auditorium who can point you in the right direction.

As the stairwell and foyer can be quite busy at the end of the performance, you are welcome to remain in your seat for a few minutes while the space clears.



**Thank you for joining us for a performance**

**If you have any questions or would like to provide feedback, please call us on  
02 9331 3107 (10am-54pm Tues-Fri) or email our Accessibility Manager,  
Jacqueline at [jacqueline@darlinghursttheatre.com](mailto:jacqueline@darlinghursttheatre.com)**

**DARLINGHURST  
THEATRE COMPANY**